

A E EVANS LAP, LEAP & NEAP SERVICE GUIDE



“ready-made for the trade”

A E Evans LAP, LEAP & NEAP Service Guide

A E Evans are one of the UK's leading manufacturers of timber play equipment. Through the Evaplay brand we supply, and assist in the design and development of the perfect product mix to ensure your Lap, Leap or Neap exceeds your customers expectations.

An extensive product range with targeted products ideal for the house builder sector means A E Evans can provide the perfect solution from a compact Lap all the way up to an extensive Neap design.

As a trade only supplier A E Evans works in partnership with a wide range of play companies, developers, architects and designers to help plan, specify and manufacture the ideal play space.

Every product has a detailed data sheet supplying all the relevant product dimensions, safety surface detail, material specifications and guarantee information. 2D DWG files are also available to download direct from the www.aeevans.co.uk website and 3D CAD files are available on request.

With all A E Evans products designed to comply fully with BS EN 1176, our ROSPA trained design team are here to help. From product tweaks to bespoke items, the design team can assist with every stage from initial concept through to vibrant visuals for customer presentations.

To assist with selecting the ideal products to suit your needs. Our play element icons give a quick and easy guide to the number of play elements each item of equipment provides. This information is vital to ensure your play area maximises it's play value and provides all required elements specified within the lap, leap and neap specifications.

Play Elements



SLIDING

Classic fun that promotes coordination and balance.



SWING

Develops rhythm, balance, and coordination with swinging motion.



CLIMB

Promotes strength and confidence with climbing features.



BALANCE

Encourages coordination and stability through balancing activities.



ROTATE

Encourages spinning motion to develop core strength and spatial awareness.



OVERHEAD

Develops upper body strength using overhead equipment.



ROCKING

Soothing or energetic motion that enhances balance and rhythm.



JUMPING

Builds agility and energy with elements designed for jumping.



CRAWL

Engages younger users in low-level, adventurous movement.



SAND

Supports sensory play through digging, scooping, and moulding.



IMAGINE

Sparks creativity and roleplay through imaginative play.



SOCIAL

Fosters interaction and communication between users.

LAP - Local Area for Play

- Within 1 minutes' walk of a main pedestrian route.
- For children 6 and under.
- Minimum 100m² activity zone with 5m buffer from nearby properties.
- Fence height 60cm+ for safety.
- Seating for parents, guardians and carers.

Example LAP visual



SOCIAL



ROCKING



JUMPING



BALANCE



IMAGINE



CLIMB

Example LAP layout



Designing the Perfect LAP

A successful LAP is more than just meeting planning requirements; it should provide a safe, engaging environment that encourages regular use by local families. By carefully selecting the right mix of play elements and layout, even compact spaces can deliver excellent play value.

Our team can help you choose the ideal equipment to create balanced, compliant, and welcoming local play areas.

LEAP - Local Equipment Area for Play

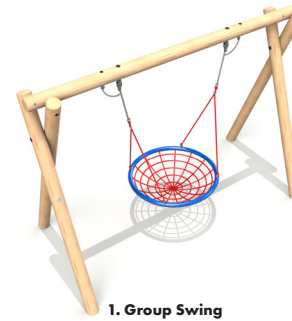
- Within 5 minutes' walk of a well-used pedestrian route.
- Designed for children starting to play independently.
- Provides a minimum of six play experiences across at least three play items.
- Minimum 400m² activity zone.
- Space for active play within the area boundaries.
- Buffers: 10m from house boundaries, 20m from dwellings.
- Fencing required if near a road for safety.
- Includes seating for parent, guardians and carers.
- Includes litter bins.

Example LEAP visual

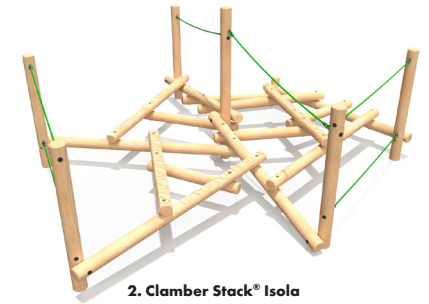


Designing the Perfect LEAP

A successful LEAP should provide a balanced mix of play opportunities that encourage independence, physical activity, and social interaction. By carefully selecting the right combination of play elements and layout, these spaces can deliver long-term play value while creating an engaging environment for growing children and local families.

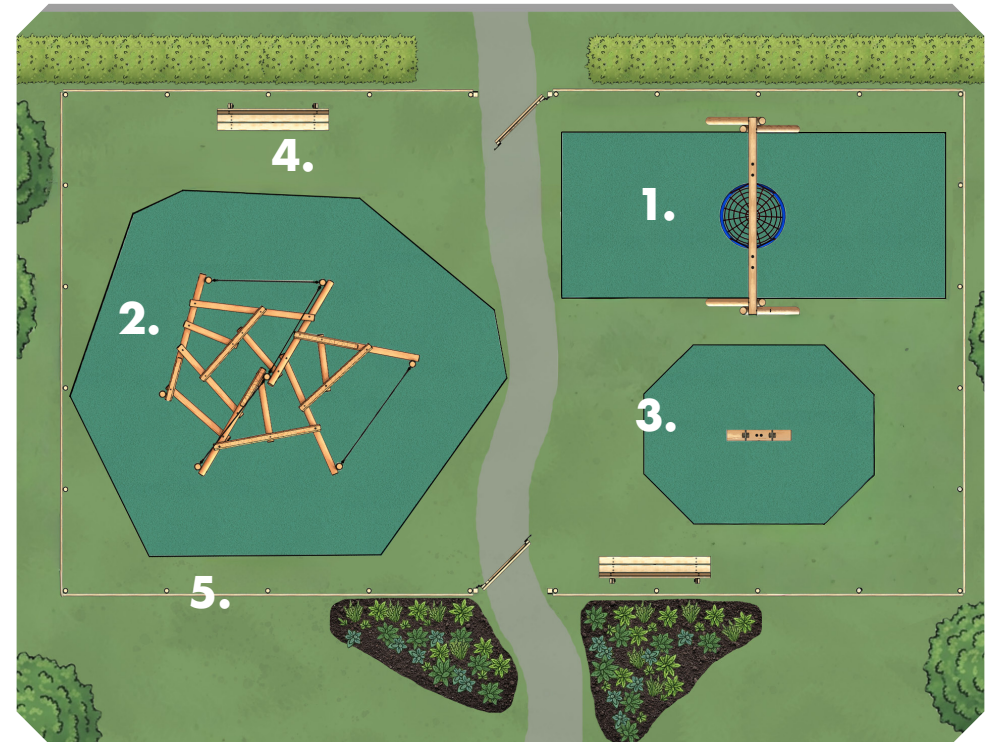


1. Group Swing



2. Clamber Stack® Isola

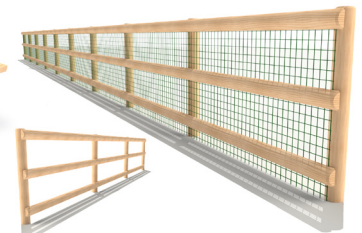
Example LEAP layout



3. 2 Way Timber Springer



4. Timber Bench



5. Post and 3 Rail Fencing

NEAP - Neighbourhood Equipped Area for Play

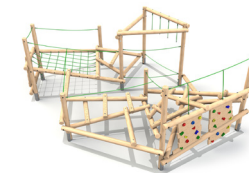
- Within 15 minutes' walk of a well-used pedestrian route.
- Mainly for older children, with a designated area for younger users.
- Offers at least eight play experiences across five or more play items.
- Minimum 1,000m² activity zone.
- Space for active play within the area boundaries.
- 30m buffer from the nearest dwelling boundary.
- Fencing required if near a road for safety.
- Includes seating for parent, guardians and carers.
- Suitable for established communities.
- Includes litter bins, and secure bicycle parking.

Example NEAP visual



Designing the Perfect NEAP

An effective NEAP should offer a wide variety of play opportunities that cater to a broad age range and encourage repeat use from the wider community. With larger spaces and more users to consider, thoughtful equipment selection and layout planning are key to creating a destination play area that remains exciting, inclusive, and well-used for years to come.



1. Clamber Stack Zio



2. Explorer Extended Double Deck Unit 4



3. 29 x 21m Timber MUGA



4. Timber Runway 2-Way



5. Lily Tower Unit



6. Bench and Table 1.4m

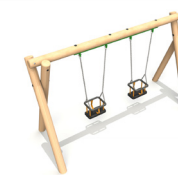
Example NEAP layout



7. Timber Bench



8. Group Swing



9. 2 Cradle Seat



10. 2 Flat Seat



11. Captains Boat



12. UK Mountain Range Play Scene

“ready-made for the trade”

Backed by over **50 years of timber manufacturing expertise** and producing play equipment for the trade, **A E Evans** is a trusted trade only supplier working with hundreds of partners across the UK, many of whom are RPII, CHAS, and API members.

We make specifying **Evaplay** equipment simple, providing the products, support, and technical information needed to confidently deliver LAP, LEAP, and NEAP projects.

What We Offer

- Extensive and growing range of play equipment.
- Products suitable for all budgets and scheme sizes.
- Bespoke design options available.
- Play Element Icons across all products.
- Visual examples to inspire your designs.



Technical Support

- 2D CAD files downloadable from our website.
- 3D CAD files available on request.
- Product data sheets available online.
- Designed to BS EN1176 standards.
- Various guarantee options available.
- FSC® accredited timber options available.



Built for the Trade

Our goal is to help trade partners create engaging, compliant play spaces with ease, making it straightforward to specify the right equipment for every project.



Your partner in play area
planning and supply

